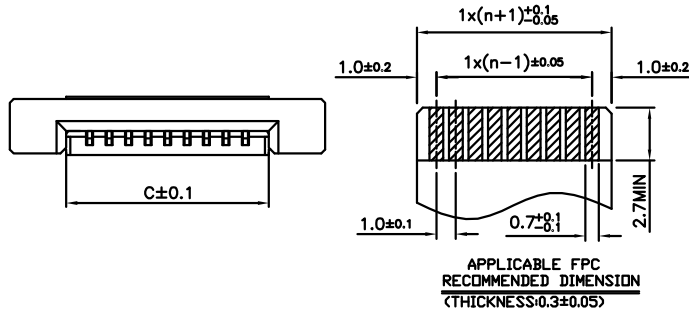


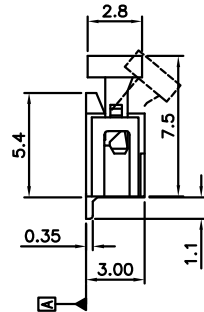
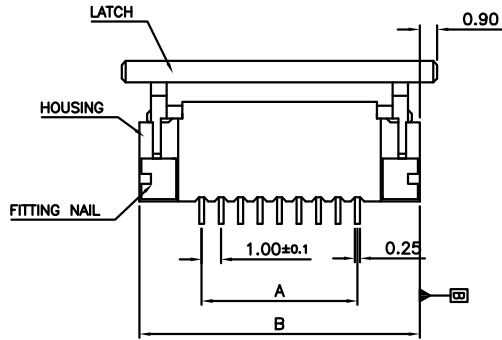
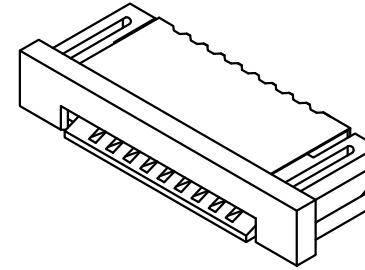
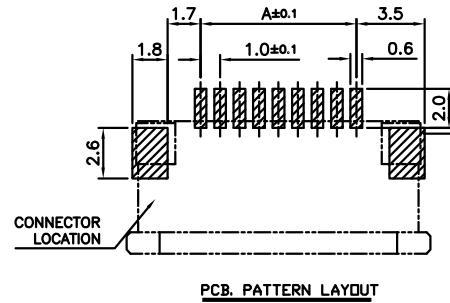
RevNo	Revision note	Date	Signature	Checked
A	ADDITIONAL LEAD FREE PLATING OPTION ADDED	28 JUN 06	NJR	JC
B	NO. OF CONTACTS CHANGED TO '04-30'	07 MAR 08	DP	IT
C	AMENDMENT TO NOTES AND ORDERING GRID RoHS COMPLIANCE LEVEL INFORMATION AND LOGO ADDED	21 AUG 08	DP	AC
D	AMENDMENT TO ORDERING GRID - PLATING AND PACKAGING OPTIONS	02 OCT 08	AE	PN
E	AMENDMENT TO SPECIFICATION AND ORDERING GRID	08 OCT 08	BL	JS

TABLE OF DIMENSION

NO OF CONTACTS	A	B	C
4	3.0	9.6	5.4
5	4.0	10.6	6.4
6	5.0	11.6	7.4
7	6.0	12.6	8.4
8	7.0	13.6	9.4
9	8.0	14.6	10.4
10	9.0	15.6	11.4
11	10.0	16.6	12.4
12	11.0	17.6	13.4
13	12.0	18.6	14.4
14	13.0	19.6	15.4
15	14.0	20.6	16.4
16	15.0	21.6	17.4
17	16.0	22.6	18.4
18	17.0	23.6	19.4
19	18.0	24.6	20.4
20	19.0	25.6	21.4
21	20.0	26.6	22.4
22	21.0	27.6	23.4
23	22.0	28.6	24.4
24	23.0	29.6	25.4
25	24.0	30.6	26.4
26	25.0	31.6	27.4
27	26.0	32.6	28.4
28	27.0	33.6	29.4
29	28.0	34.6	30.4
30	29.0	35.6	31.4



APPLICABLE FPC  
RECOMMENDED DIMENSION  
(THICKNESS:0.3±0.05)



ORDERING INFORMATION

10A22 - XXZ - XFX

NO. OF CONTACTS  
04 TO 30

PLATING  
N = MATT TIN LEAD FREE  
5 = GOLD FLASH (ALL OVER)

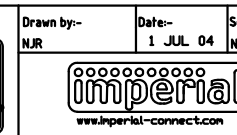
PACKAGING OPTIONS  
F = TAPE & REEL

COMPLIANCE LEVEL  
1 = RoHS COMPLIANT  
2 = RoHS + HALOGEN FREE COMPLIANT

NOTES:

- MATERIAL:
- HOUSING: COMPLIANCE LEVEL 1 = NYLON 46  
COMPLIANCE LEVEL 2 = HTN
- LATCH: COMPLIANCE LEVEL 1 = PPS  
COMPLIANCE LEVEL 2 = LCP
- TERMINAL: COPPER ALLOY
- FITTING NAIL: COPPER ALLOY
- SELECTED PLATING OVER Ni.
- COPLANARITY 0.1 MM MAX. BASE ON DATUM A
- TRUE POSITION 0.1 MM MAX. BASE ON DATUM B

ANGULAR	MM	TOLERANCES UNLESS OTHERWISE NOTED
± 2°	0.0 ± 0.25	THIRD ANGLE PROJECTION



Drawn by:- NJR	Date:- 1 JUL 04	Scale:- NTS	Material:- SEE NOTE	Revision E	Part Number:- 10A22
1.0mm FFC CONN. SMT R/A BOTTOM CONTACT			© THIS DRAWING IS CONFIDENTIAL AND MUST NOT BE COPIED OR REPRODUCED WITHOUT WRITTEN CONSENT		
			E and OE	Sheet 1/1	